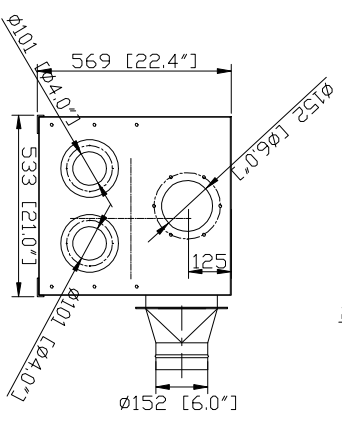
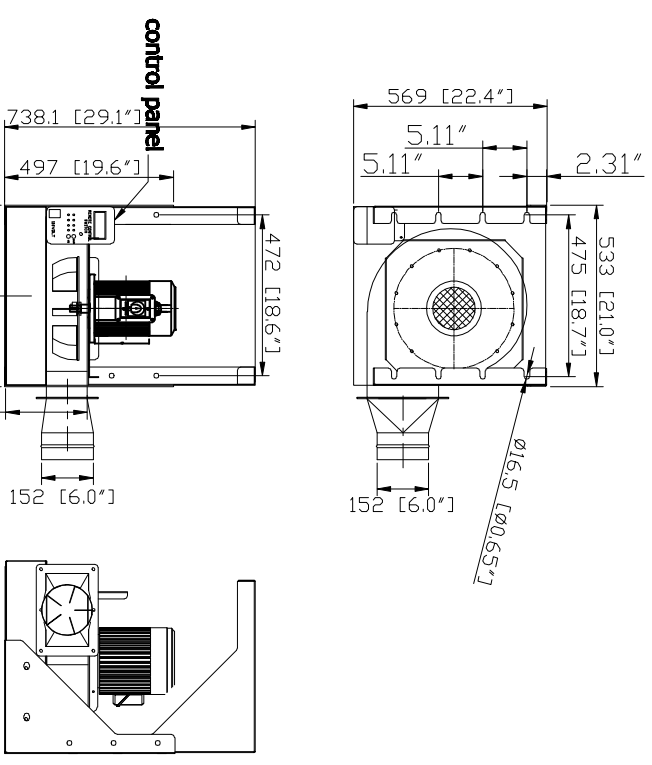


Revisions			
Rev	Description	Date	Approved

**- SBU-1.5 SPECIFICATION -**



- Direct Drive Blower
  - Motor: 1.5HP x 1 pc
  - Electrical: 120volt single phase
  - CFM: 886 ft3/min
  - Arm Port Size: dia. 6" x 1 hole  
dia. 4" x 2 holes
  - Construction: 14 Gauge Steel Cabinet
  - Packing Size (L x W x H): 24" x 23" x 22"
  - N.W.: 125 lbs
  - G.W.: 126 lbs
- Include:**
- control panel
  - remote control
  - standard wall-mounting brackets

**OPTIONS**

\*\*\*optional ceiling-mounting brackets

<b>AVANI ENVIRONMENTAL INTL. INC. Sales Department</b> 95 Cypress Drive Youngsville, NC 27596 (919) 570-2962 info@avanienvironmental.com			
Drawn by:	Date	Name	Part Number:
Checked by:	2012-03-30	***	DBB-1.5
Title: <b>Blower SBU-1.5</b>			Size Scale <b>A</b> 1 = 1
The drawings, AutoCAD, 3-D Models, and specifications are the property of Avani Environmental Intl. Inc. (AE) and may not be reproduced, distributed, modified, or otherwise used, except provided herein, without the express written permission of AE.			Drawing Number: A02-03-DBB-1.5